

Composite Manifold

CMF1



CMF1 WITH ASV (OPTION 1)



CMF1 WITH ASV (OPTION 2)

Patent Applied No. 201721047454



FEATURES

- » Designed for SWAS System application
- » Suitable for long service in high temperature and pressure
- » Easy to install with NPT thread
- » Heavy duty, rugged bodies with extra heavy bore
- » No-leak joints

ADVANTAGES

- » Integral combined unit with strainer, process header, needle valve with drain, TI, PI and temp control (ASV/SOV-Switch)
- » Reduces the size of mounting plate
- » Reduces the cost of tubing, fitting, mounting space, no. of components, timing, hardware and labour.
- » Maintenance free
- » Easy for the replacement of all components
- » Cleaning port available
- » Single SS material option ensures high reliability of the component
- » No. of joints are reduced so no more leakages in the system

DESCRIPTION

AXIS offers a various type of components covered in one manifold. This manifold is designed for Steam and Water Analysis System (SWAS) applications. The manifold features a horizontal body design. Manifold connections include NPT female thread. The flow of sample through an AXIS manifold is controlled by filtering the sample, over temperature protection, process chamber, measuring the temperature and pressure and maintain the back pressure by this Composite Manifold. Each component has a specific function to maintain the back pressure to over temperature protection.

TECHNICAL FEATURES

Body Design of Manifold

Only one piece construction design that has provided more strength and minimum leakage

MOC of Manifold

All components and parts are of SS 316 Construction

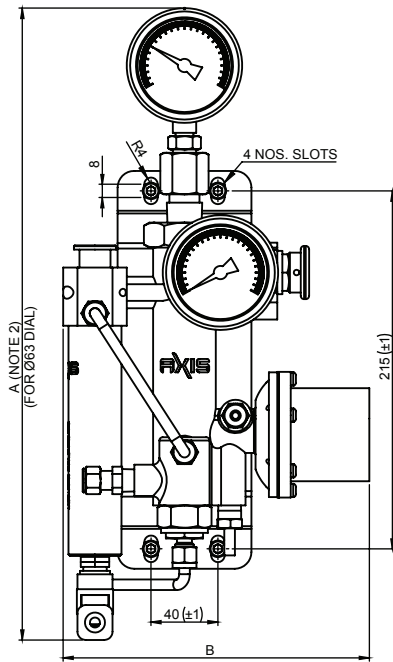
Internal Finish

Burr-free threads and internal surfaces reduce leaks, promoting accurate transmitter readings.

Fitting

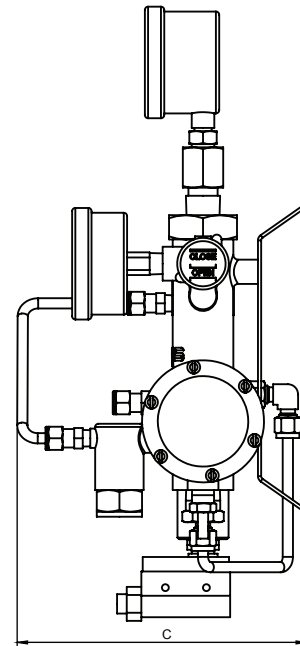
Avoiding fitting will ensure that we have trouble free operation in future and any maintenance hassles

DIMENSION DETAILS

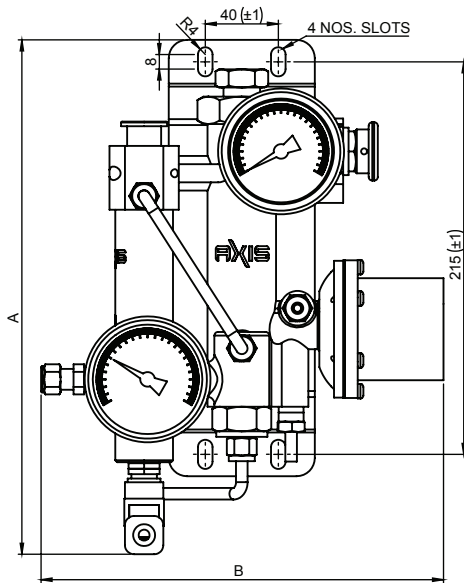


FRONT VIEW

CMF1 WITH ASV (OPTION 1)

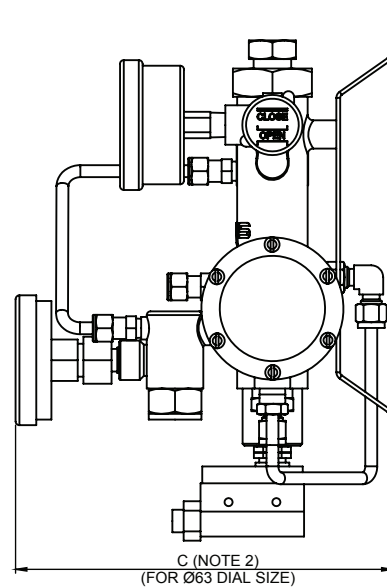


SIDE VIEW



FRONT VIEW

CMF1 WITH ASV (OPTION 2)



SIDE VIEW

All Dimension are in MM

DIMENSION TABLE

	A (mm)	B (mm)	C (mm)
CMF1 WITH ASV (OPTION 1)	380	183	179
CMF1 WITH ASV (OPTION 2)	282	220	200
CMF1 WITH SOV (OPTION 1)	359	187	181
Note: 1) All dimensions are subjected to tolerance of ± 5 mm. 2) Dimension depends on make of gauge			

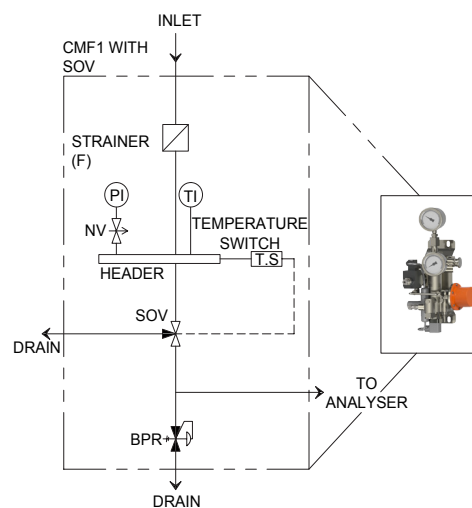
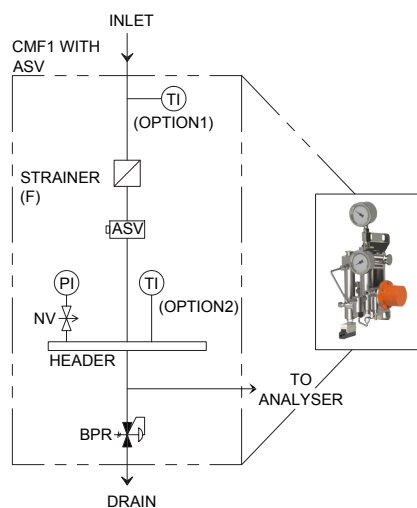
COMPONENTS COVERED

- » Needle valve with drain (NVD1)
- » Pressure Indicator (PI)
- » Temperature Indicator with thermowell (TI)
- » Back Pressure Regulator (BPR)
- » Strainer (F)
- » Header
- » Auto shut off valve (ASV) or SOV with Temperature Switch

Optional

1. Temperature Indicator with 100 mm dial size
2. Pressure Indicator with 100 mm dial Size
3. Temperature switch with solenoid Valve
4. Alarm contact for Auto shut off valve

SCHEMATIC



TECHNICAL SPECIFICATION

General	Type	Composite Manifold
	Mounting	Horizontal Line Mounting
	Dimension	Refer Dimension Table
	Sample	Water
Material	Body	SS 316
	Seating	PTFE for sealing joint metal to metal
	Other Parts	Suitable to HCL & other acids like H ₂ SO ₄
Functionality	Pressure	30 Kg/cm ² Max.*
	Media Temperature	80°C Max.
Connection	Sample Inlet	1/4" OD
	Sample Outlet	1/4" OD

* Pressure rating is only for Manifold body. Pressure rating of overall assembly depends on pressure rating of devices / components used in assembly.

ORDERING INFORMATION

CMF1							9	9	9	
	Temperature indicator									
	0								63mm dial size	
	1								100mm dial size	
	Pressure indicator									
	0								63mm dial size	
	1								100mm dial size	
	Component selection									
	0								with 3-way SOV	
	1								with ASV1	
	Power supply for SOV									
	0								None	
	1								115VAC, 50Hz	
	2								230VAC, 50Hz	
	Temperature Indicator location									
	0								After ASV	
	1								Before ASV	
	Note : This option is applicable only for ASV									
	If ASV select									
	0								None	
	1								with alarm contact	
2								without alarm contact		

TECHNICAL SPECIFICATIONS PARE / ACCESSORIES

Spare / Accessories list for Composite Manifold with Auto Shut off Valve Option

Sr. No.	Description	Part No.	Qty.
1	Strainer Element , 40 Micron	ASPL6388	1 No.
2*	Temperature Indicator ; Dial : 63 mm ; Bottom entry ; SS 304	ASPL7359	1 No.
3*	Temperature Indicator ; Dial : 100mm ; Bottom entry ; SS 304	ASPL7596	1 No.
4*	Temperature Indicator ; Dial : 63 mm ; Back entry ; SS 304	ASPL7597	1 No.
5*	Temperature Indicator ; Dial : 100mm ; Back entry ; SS 304	ASPL7598	1 No.
6*	Pressure Indicator , Dial : 63 mm ; Back entry; SS 304	ASPL7358	1 No.
7*	Pressure Indicator , Dial : 100 mm ; Back entry; SS 304	ASPL7578	1 No.
8	Auto Shut off Valve	ASV1	1 No.
9	Alarm Switch	ASPL4012	1 No.
10	O-Ring Set (1 Pkt. Includes all 4 O-Rings)	ASPL7577	1 Pkt.
11	PTFE Washer (1 Pkt. Includes all 2 Washers)	ASPL7586	1 Pkt.

* Check Manufacturer before ordering

Spare / Accessories list for Composite Manifold with Solenoid Valve Option

Sr. No.	Description	Part No.	Qty.
1	Strainer Element , 40 Micron	ASPL6388	1 No.
2*	Temperature Indicator ; Dial : 63 mm ; Bottom entry ; SS 304	ASPL7599	1 No.
3*	Temperature Indicator ; Dial : 100 mm ; Bottom entry ; SS 304	ASPL7600	1 No.
4*	Pressure Indicator , Dial : 63 mm ; Back entry; SS304	ASPL7358	1 No.
5*	Pressure Indicator , Dial : 100 mm ; Back entry; SS304	ASPL7578	1 No.
6	Temperature Switch	ASPL7587	1 No.
7*	3 Way Solenoid Valve , SS 316 , 1/4" NPTF , 110 VAC , 50 Hz	ASPL0029	1 No.
8*	3 Way Solenoid Valve , SS 316 , 1/4" NPTF , 230 VAC , 50 Hz	ASPL0027	1 No.
9	O-Ring Set (1 Pkt. Includes all 4 O-Rings)	ASPL7577	1 Pkt.
10	PTFE Washer (1 Pkt. Includes all 2 Washers)	ASPL7586	1 Pkt.
11	3 Way 4 Pin Connector	ASPL7579	1 No.
12	Socket	ASPL7550	1 No.

* Check Manufacturer before ordering