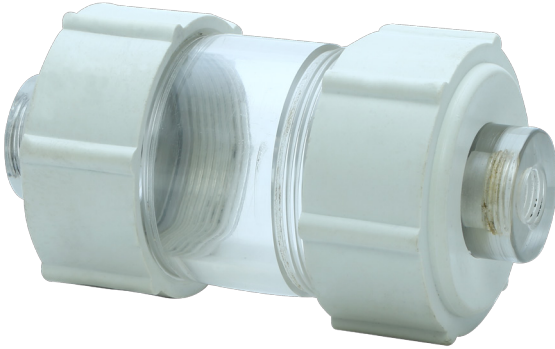


Condensate Catch Pot

CCP1



CCP1

TECHNICAL SPECIFICATION

General	
Mounting	Wall
Sample	Condensate Gas
Material	
Body	Transparent Acrylic
End cop.	PPCP
Seating	Neoprene
Connections	
Sample Inlet	1/4" NPT (F)
Sample Outlet	1/4" NPT (F)
Functionality	
Temperature	Ambient 50°C (Max)
Pressure	4 kg / cm ² (Max)
Volume	Approx. 92 ml

FEATURES

- » Ease of maintenance
- » Transparent cover for better process visibility
- » Light in weight
- » Used in Analyzer gas conditioning

ADVANTAGES

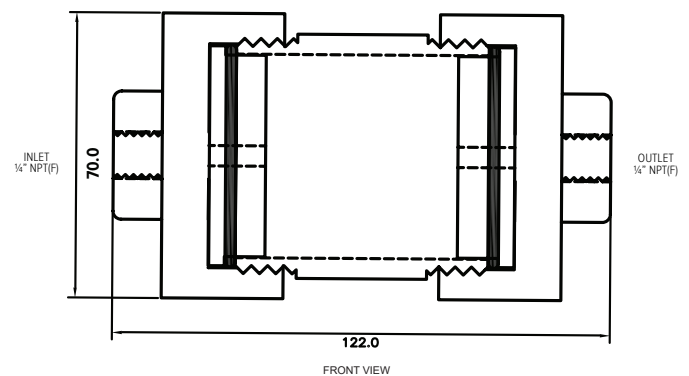
- » Cost-effective
- » User-friendly with full & easy service access
- » Leak-free O-ring seal
- » Compact design

DESCRIPTION

The Reliable & long-term operation of any Process Analyzer depends upon the efficiency of the sample conditioning system for which dust, solid particulate & moisture-free sample gas is essential. Where condensate removal from the sample is a major problem for analyses of gas, the Condensate Catch Port is the best solution.

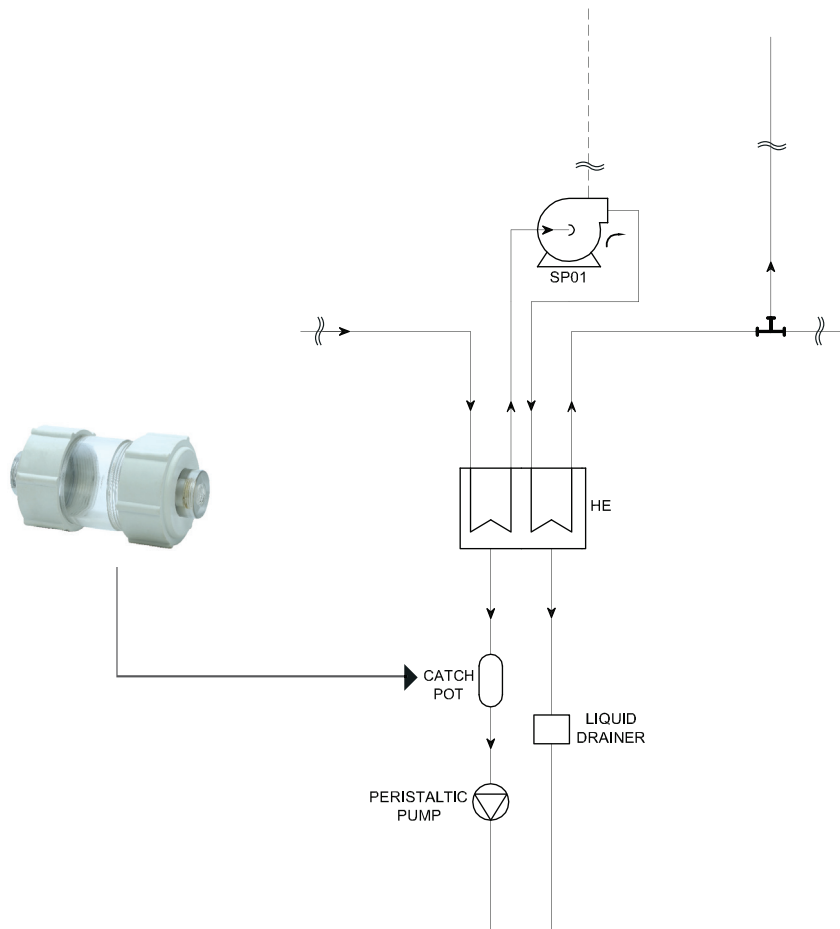
CCP1 is equipped efficiently, to catch the condensation from the kinetic or Condensate separator or filter drain or wherever it is necessary to collect the condensation. The condensation-free sample gas is a must for ensuring the security of the Analyzer. The folded construction of the CCP1 & compatibility of the designed components like end cap (top & bottom) and transparent acrylic body materials ensure ease of mounting & trouble-free maintenance. This also acts as a volume chamber.

DIMENSION DETAILS



All Dimension are in MM

APPLICATION DIAGRAM



PRODUCT

Description	Part No.	Qty.
Condensate Catch Pot	CCP1	1 No.