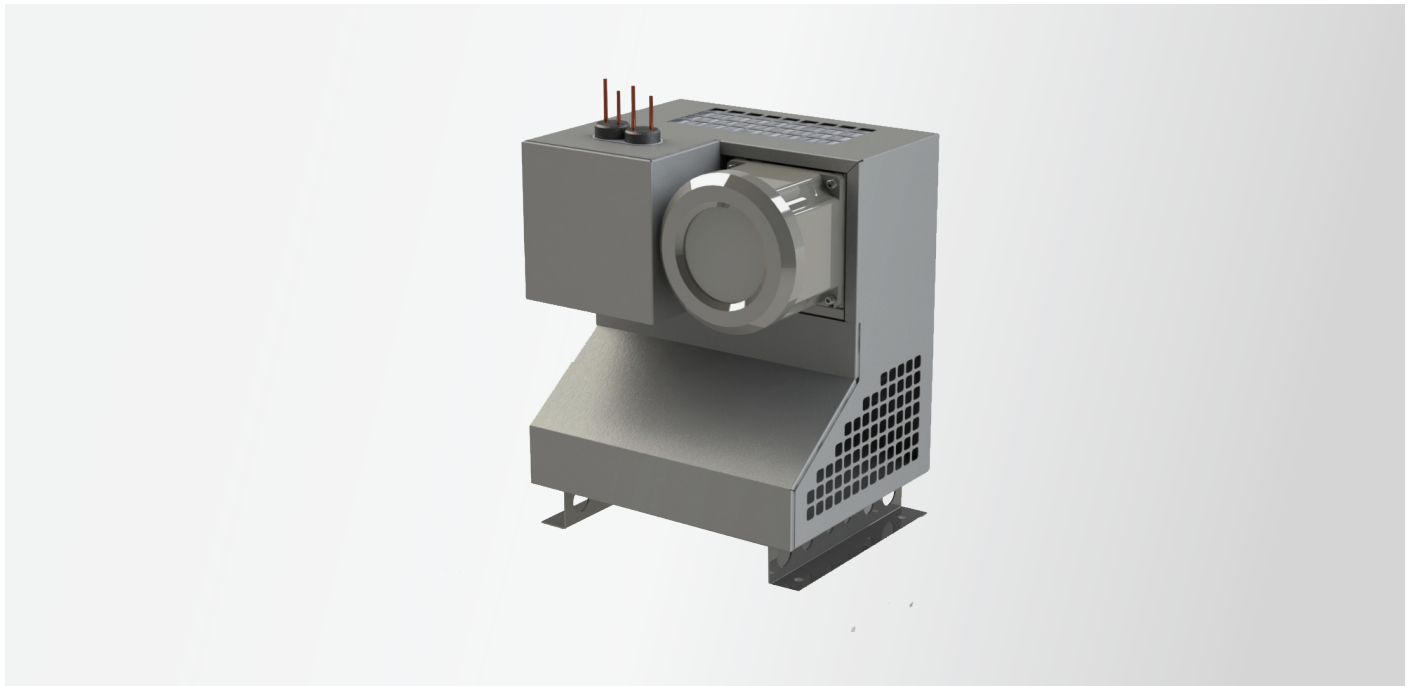


Ex Proof Sample Gas Cooler

COOLEREX



FEATURES

- » Used in Analyser Gas Conditioning
- » High quality robust design
- » Suitable up to 50°C Ambient Temperature
- » Cooling Capacity up to 320 KJ
- » Optimum operational reliability
- » Sample flow rate 550 LPH Max
- » Used in Zone 1 & 2 , IIC hazardous area

ADVANTAGES

- » Economical
- » Ease of Maintenance & Operation
- » Indoor application
- » Optional Alarm contact
- » Single and dual path heat exchanger options
- » High Dewpoint Stability

DESCRIPTION

Reliable & long term operation of an Analyzer depends upon efficiency of the Sample conditioning system for which stable dew point of the sample is essential.

Axis COOLEREX Sample Gas Coolers are compressor cooled, equipped with efficient heat exchangers to provide stable dew point of the sample at outlet, there by ensuring security with precise performance of the Analyzer.

Cooling performance is ensured by having very tight control within tolerance range of dew point indirectly with mechanical control.

The heat exchangers are either Single Coil or Dual Coil so that two different streams can be catered. Very compact housing design ensures best placement of other components with saving of the cost Insulation at top of heat exchanger effectively isolates ambient effect.

In COOLEREX power supply can be either any of 115 VAC or 230 VAC. For electrical connection provides separate Flame proof Junction box suitable in Zone 1 & 2 , IIC hazardous area.

