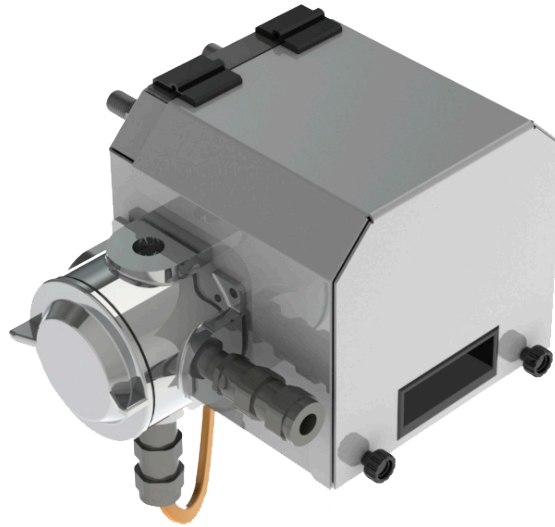


Ex-Proof Sample Gas Probe

PROBEX



PROBEX



FEATURES

- » Used in Analyzer Gas Conditioning
- » Stainless Steel construction
- » Optional Pulsating Purge Port
- » Flange Mount
- » Available in various flange sizes and probe Ext. Tubes sizes
- » Optimum operational reliability
- » Self-limiting up to 120°C / 180°C
- » Used in Zone 1 & 2 hazardous area

ADVANTAGES

- » Economical
- » Ease of Maintenance & Operation
- » Outdoor and indoor application
- » Replacement of filter element without any tools.
- » Less Volume & Fast Response time

DESCRIPTION

In any sample gas conditioning, the sample take-off point is a very challenging part between processes and the sample conditioning system. Hence the Axis PROBEX sample gas probe is specifically designed for this harsh and robust hazardous environment with competitive cost.

The reliable and long-term operation of any process analyzer depends upon the efficiency of the sample conditioning system for which dust, solid particulate, and moisture-free sample gas is essential.

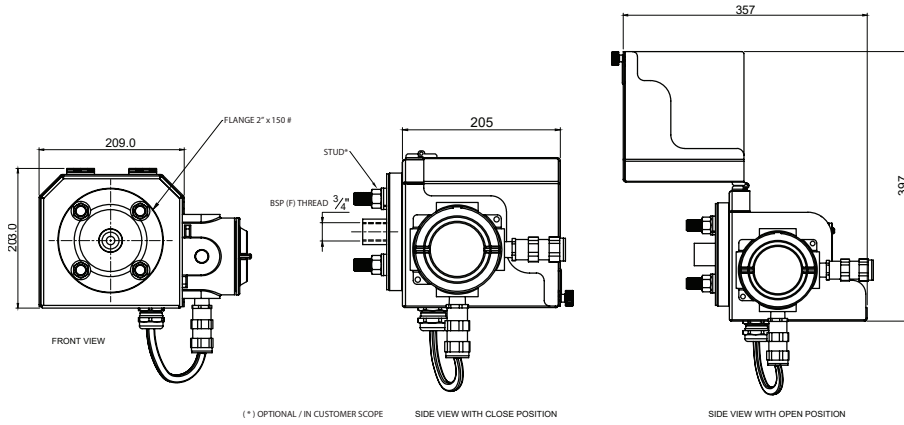
PROBEX is equipped & designed with efficient variable filters by removing aerosols, dust content, and humidity by ensuring the security of the analyzer as well as further sample conditioning system.

The main application of the sample gas probe is to extract the gas for analysis in the Continuous Monitoring and Emissions System. Axis PROBEX ensures easy mounting and installation, optimum operation, and trouble-free maintenance.

Changing the external filter element needs no tools and no disassembly of the sample lines. The complete filter assembly is removed out at the probe head side. This makes it simpler to check the filter element & gasket condition.

The PROBEX heated probe power supply can be in any of 110 VAC and 230 VAC. No thermostat or temperature limiters are necessary. For electrical connection provides a separate Flameproof Junction box suitable for operation in Zone 1 & 2 hazardous area provided.

DIMENSION DETAILS



TECHNICAL SPECIFICATION

General	Mounting	Flange
	Mounting Angle	5° - 15° recommended
	Sample	Flue Gas or process gas
	Weight	Approx. 11 kg
Material	Probe Flange	SS 316
	Probe Body	SS 316
	Probe Filter	SS 316 Pleated, SS 316 Sintered Ceramic (Optional)
Connections	Probe	2" 150 As per ANSI B16.5 flange (Other on request)
	Sample Gas Inlet	3/4" BSP (F)
	Sample Gas Outlet	1/4" NPT (F)
	Filter Purge Port	1/4" NPT (F) (Optional)
Electrical	Power Supply	110 VAC or 230 VAC, 50 Hz
	Power Heating	Self-regulating up to +180°C
	Ready for Operation	after 45 - 60 minute
Functionality	Sample Pressure	Max. 6 bar
	Dust Load	2 gram/ Nm ³
	Ambient Temperature	0°C to 80°C
	Media Temperature	Max. 180°C
	Filter Chamber Volume	Approx. 28.27 cm ³
	Filter Porosity	0.3, 0.5, 5, 10 Micron

Note 1 : If others then we have to use Stub or Adaptor Flanges as per order

Note 2 : 0.5 Micron with SS 316 Sintered Filter.

Note 3 : 5 Micron with All Types.

Note 4 : 10 Micron with SS 316 Pleated

Note 5 : 0.3 Micron with Ceramic Filter

Note 6 : For Zone information ATEX/CCOE contact ASPL

ORDERING INFORMATION

PROBEX1									9	Description	
	Power Supply										
	1									110 VAC, 50 Hz	
	2									230 VAC, 50 Hz	
		SS 316 Flange Size									
	0									2" 150#	
	1									Others (Note 1)	
		Type of filter Element									
	0									SS 316 Pleated	
	1									SS 316 Sintered	
	2									Ceramic	
		Probe Extension 3/4" Dia. (SS 316) Pipe length									
	0									1000 mm	
	1									1500 mm	
	2									Others	
		Retention Rate									
	0									0.5 Micron (Note 2)	
	1									5 Micron (Note 3)	
	2									10 Micron (Note 4)	
	3									0.3 Micron (Note 5)	
		Temperature (Note 6)									
	0									Up to 120°C	
	1									Up to 180°C	
		Area Classification (Note 6)									
	0									Zone 1, IIC	
	1									Zone 2, IIA - IIB	

SPARES

Description	Part No.	Quantiy
10µ, SS 316 Pleated Filter	ASPL4406	1 No.
0.5µ, SS 316 Sintered Filter	ASPL8664	1 No.
5µ, SS 316 Sintered Filter	ASPL6157	1 No.
0.3µ, Ceramic Filter	ASPL11966RFD	1 No.
5µ, Ceramic Filter	ASPL11967RFD	1 No.
5µ, SS 316 Pleated Filter	ASPL4405	1 No.