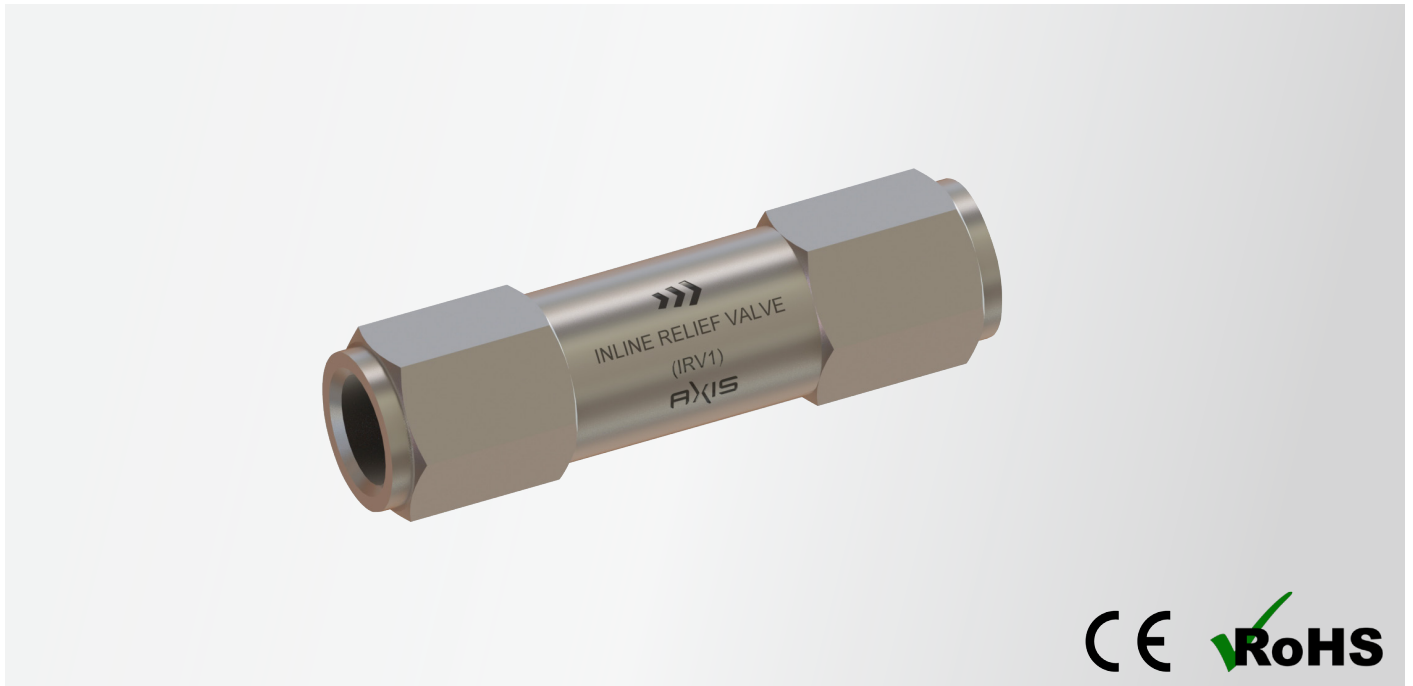


# Inline Relief Valve

## IRV1



### FEATURES

- » Economical
- » Inline installation
- » Less maintenance
- » Uni-directional safety relief

### ADVANTAGES

- » Used up to 10.3 bar and 170° C media temperature
- » Highly reliable for continuous operation
- » Designed for precised Control

### DESCRIPTION

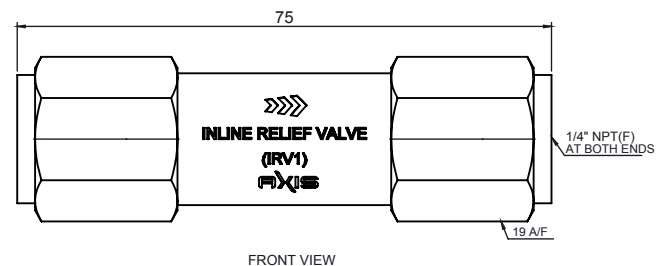
Axis Inline Relief Valve IRV1 is designed to deliver continuous Uni-directional flow control to further system and provide Uni-direction safety at predefined level. It is mainly used in instrumentation sample handling system for all type of Gas media application. Used in Oil and Gas refinery, power, chemical pharmaceutical, Pulp and any type of process industries.

Many features of the IRV1 make it ideal for wide range of applications controlling Uni-direction flow control and safety for gas media. It has wide operating range up to 10.3 bar and up to 170°C media temperature can be sustained

### TECHNICAL SPECIFICATIONS

|                   |                                       |
|-------------------|---------------------------------------|
| Mounting          | Line Mount                            |
| Body Material     | SS 316                                |
| Relief Pressure   | Adjustable 3 to 15 psig ( Predefine ) |
| Seat Material     | Soft Seated Viton                     |
| Dimension         | Refer Dimension Detail                |
| Connection        | 1/4" NPT (F)                          |
| Inlet Pressure    | Max. 10.3 bar ( 150 psig )            |
| Media Temperature | Max. 170°C                            |

### DIMENSION DETAILS



All Dimension are in MM