



## Sample gas probe GAS 222.15 ANSI CSA

In many applications gas analysis is the key for safe and efficient control of process flows, environmental protection and quality assurance. In extractive gas analysis the location of the gas sampling point is crucial for the reproducibility and accuracy of the analysis results.

The specific filter capacity, corrosion resistance and functional equipment requirements for the probe arise from the composition of the sample gas.

However, operating costs are also an important criterion in the selection, as the sampling points are frequently located at hard to access points in the system. Effective particle filter backwashing options and low maintenance characterise the extensive GAS probe series.

Heated probe with downstream filter

The downstream filter can easily be removed by turning the handle 90°

The probe body and the area around the screw connection for the heated sample gas line are completely isolated

Self-regulating heater to approx. 180 °C with low temperature alarm

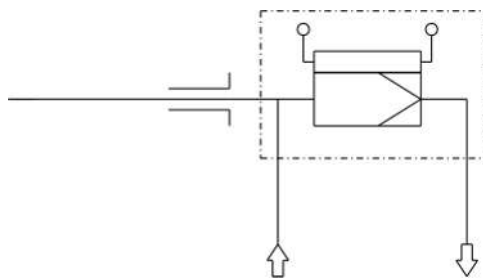
For dust loads up to 2 g/m<sup>3</sup>

This probe is not suitable for use in Ex areas

"CSA C & US" approval only when used with 3" 150lbs. ANSI flange



**Flow diagram**



**Technical Data**

**Gas Probe Technical Data**

Probe operating temperature:	max. 200 °C
Ambient temperature:	-20 to +80 °C
Self-regulating heater:	+180 °C
Low temperature alarm:	Contact open at operating temperature, closes at < 140 °C, Max. switching current 4 A
Electrical data:	230 V, 2.0 A, 50/60 Hz 115 V, 3.8 A, 50/60 Hz
Max. operating pressure:	6 bar
Parts in contact with media:	Flange: 1.4571 Seals: Graphite/1.4404 and see filter

**Ordering instructions**

The item number is a code for the configuration of your unit. Please use the following model key:

4622215											1 9 9 0 3 X 0 0 9 9 9 9 9 9											Product Characteristics
																						<b>Flange type</b>
																						ANSI 3"-150 lbs <sup>1)</sup>
																						<b>Cleaning the probe</b>
																						115/230 V
																						<b>Calibrating gas connection</b>
																						No calibrating gas connection
																						6 mm
																						6 mm + check valve
																						1/4"
																						1/4" + check valve

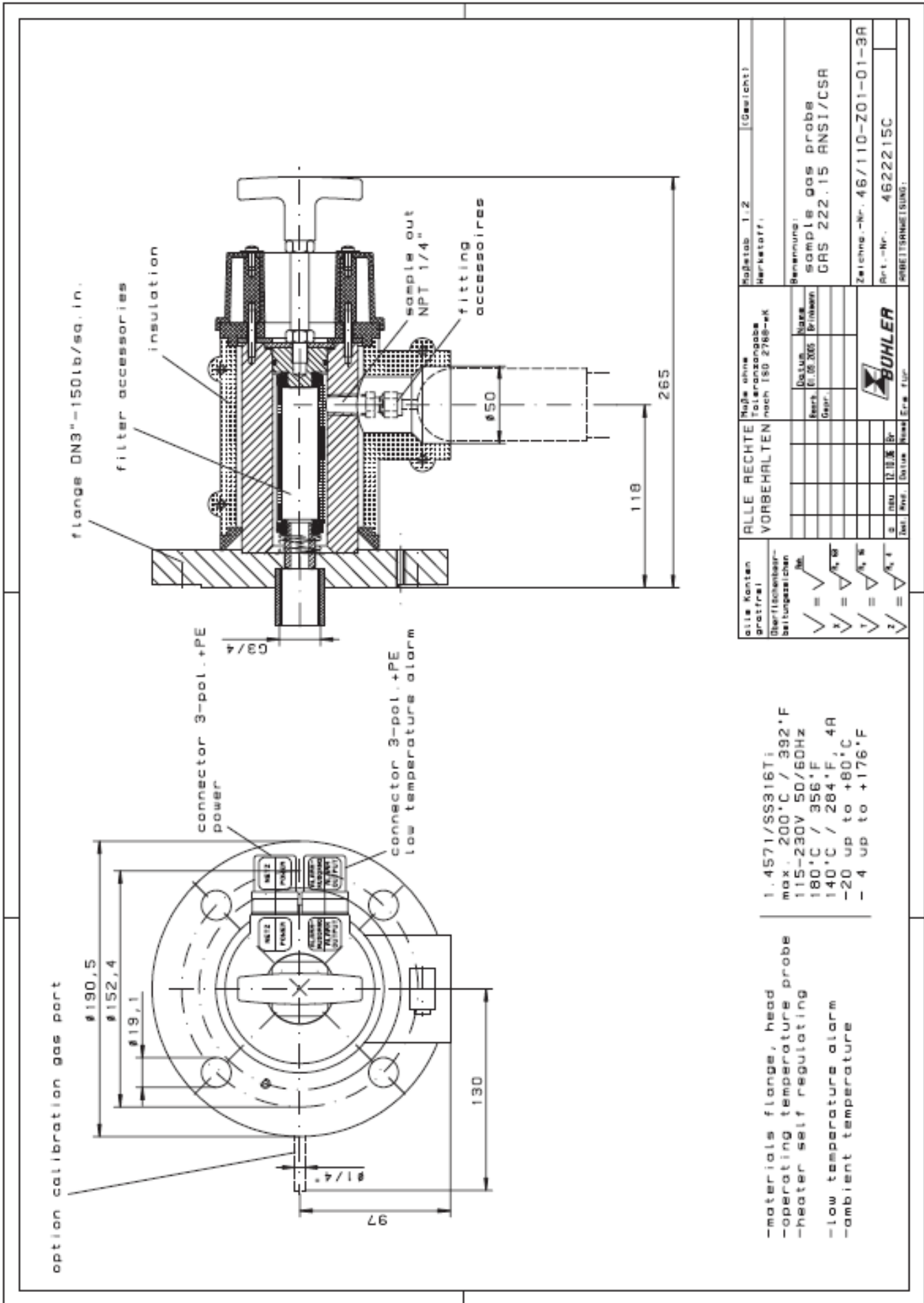
<sup>1)</sup> Probes with ANSI flange are CSA and C-US approved

**Options**

The base unit becomes functional by adding accessories suitable for the application. Please refer to accessory data sheet no. 461099 for information.

Please also refer to data sheet no. 461000 "GAS 222 Gas Probes" for a general description.

Dimensions



1.4571/SS316Ti  
 max. 200°C / 392°F  
 115-230V 50/60Hz  
 180°C / 356°F  
 140°C / 284°F, 4A  
 -20 up to +80°C  
 - 4 up to +176°F

- materials flange, head
- operating temperature probe
- heater self regulating
- low temperature alarm
- ambient temperature

alle Kosten gestrichelt Überflüssigkeiten beibehalten	ALLE RECHTE VORBEHALTEN	Maße ohne Toleranzangabe nach ISO 2768-mk	Maßstab 1:2 (Gewicht)
✓ = <input checked="" type="checkbox"/> $\frac{1}{2}$ ✓ = <input checked="" type="checkbox"/> $\frac{1}{4}$ ✓ = <input checked="" type="checkbox"/> $\frac{1}{8}$ ✓ = <input checked="" type="checkbox"/> $\frac{1}{16}$	Datum: Erst: 05.2005 Gepr.: Name: Bräunlin:	Benennung: sample gas probe GAS 222.15 ANSI/CSA	Zeichn.-Nr. 46/110-Z01-01-3A Art.-Nr. 4622215C BEWEITERSAMMELUNG:
S 380 R 222.15 B Bohler		Zeichn.-Nr. 46/110-Z01-01-3A Art.-Nr. 4622215C BEWEITERSAMMELUNG:	